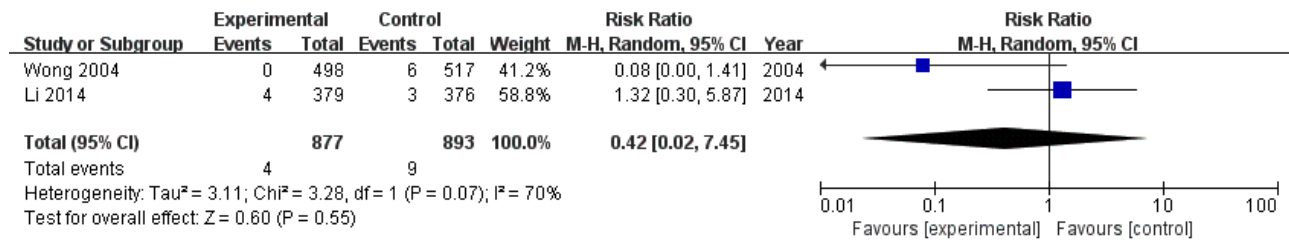
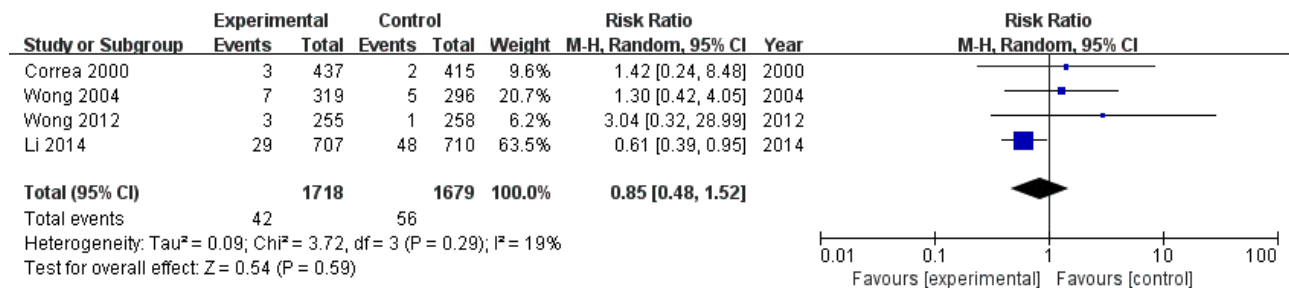


(A)



(B)



**Supplementary Figure 2.** Meta-analysis of effect of *Helicobacter pylori* eradication on gastric cancer development. (A) Forest plot of studies reporting gastric cancer in eradication group and control group in subjects with no precancerous lesions at baseline. (B) Forest plot of studies reporting gastric cancer in eradication group and control group in subjects with atrophic gastritis, intestinal metaplasia, and dysplasia at baseline. M-H, Mantel-Haenszel test.